

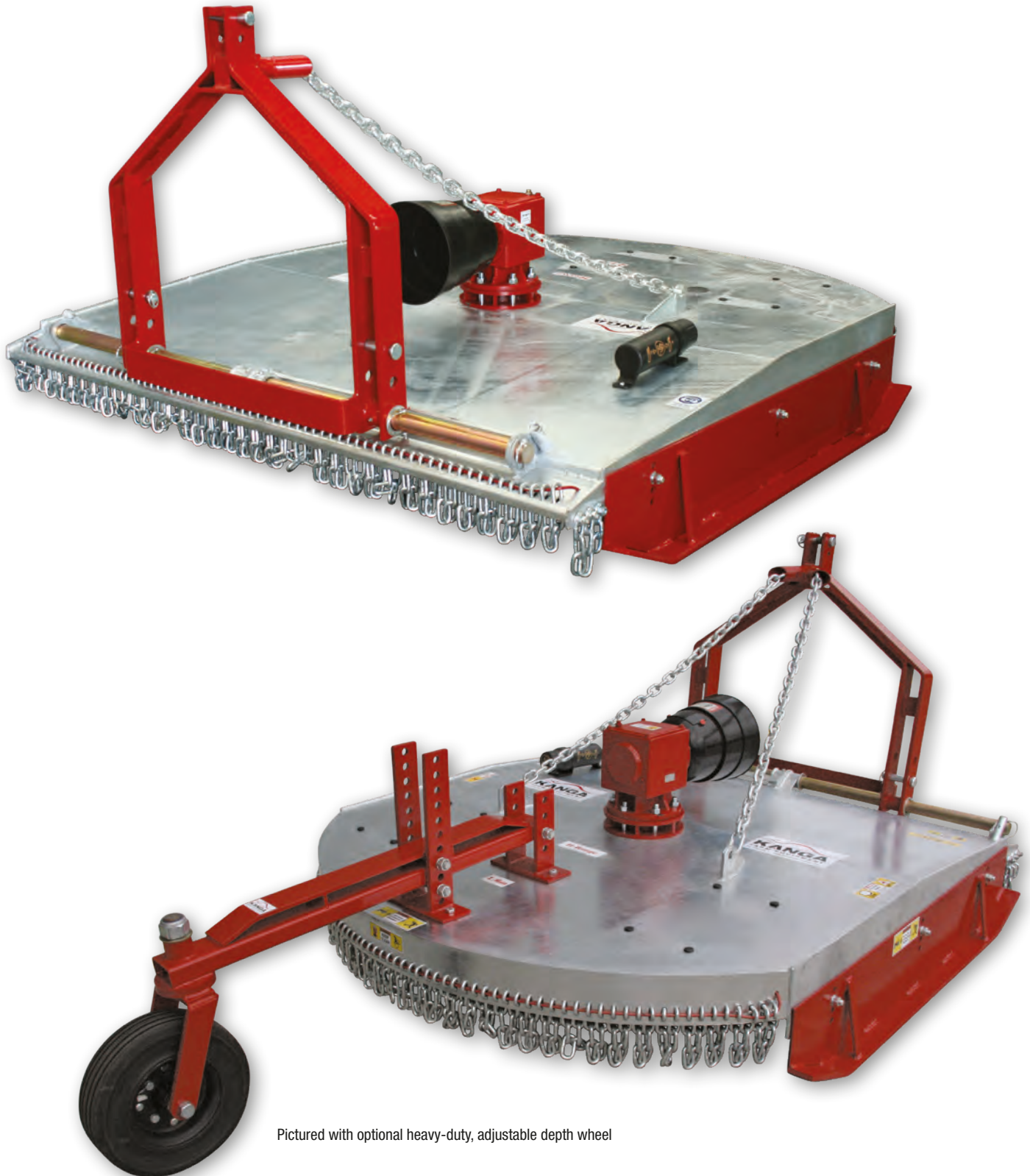
H Range Rotary Cutter



KANGA H Range Rotary Cutters are designed and engineered to handle the most demanding conditions in Australia. Recommended and sold by our dealers since 1983 the KANGA H Range is a reliable, robust, high performing cutter. It is suited to a diverse range of applications, from farmers clearing scrub and regrowth to contractors cutting roadsides and maintaining mining sites or government land.

The lowered, reinforced 130mm spring steel cutter bar is powered by a high-ratio gearbox, which allows a larger volume of material to be easily cut and discharged.

The hot dipped galvanized 5mm deck is fully reinforced underneath, creating a clean top design that reduces the collection of debris and water. Front and rear incorporated safety chains come standard, for maximum safety.

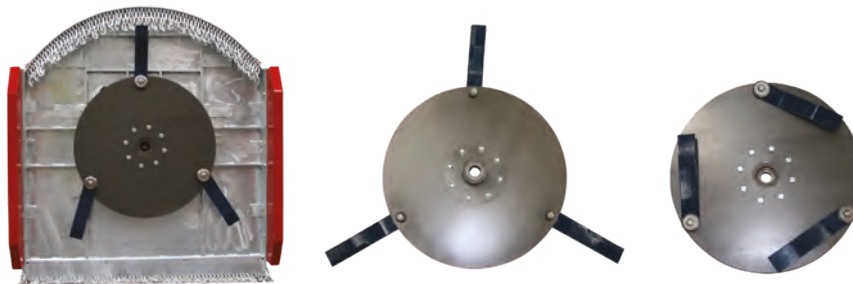


Pictured with optional heavy-duty, adjustable depth wheel



Code	KSHR180	KSHR210
Size reference	1.8m 6'0" 72"	2.1m 7'0" 84"
Construction	5mm, round-back, clean top deck with reinforced subframe	
Gearbox	130hp, 540rpm, 1:1.92 ratio	130hp, 540rpm, 1:1.46 ratio
PTO shaft/clutch	Series 8 with 200mm (8") friction (slip) clutch	
Skids	Adjustable, positive locking, four (4) positions (30mm increments)	
Cutter bar	Lowered, bolt together, high tensile/spring steel	
Blades	Stepped, suction, heat-treated, spring steel pivoting on hardened bushes	
Linkage/Mounting	Double clevis, category 2	
Tower position(s)	Multiple - offset (left and right) and centre mounted	
Finish	Hot dipped galvanized deck and painted parts	
Stone guards	Front and rear chains (10mm) incorporated into the deck	
Overall width (mm)	2040	2335
Cutting width (mm)	1800	2100
Cutting height (mm)	50 - 140	
Tractor range (hp)	80 - 120	90 - 130
Blade tip speed (ft/min)	19,560	17,370
Weight (kg)	610	705

Optional three (3) blade disc rotor for heavy-duty cutting

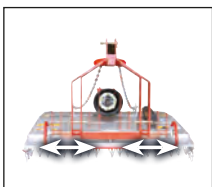


Options

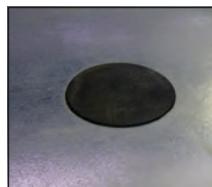
- KHRDW** KANGA heavy-duty depth wheel (each)
- 100.180** Three (3) blade disc rotor (suit H1800)
- 100.170** Three (3) blade disc rotor (suit H2100)
- 100.185** Upgrade H1800 cutter bar (full spring steel)
- 100.186** Upgrade H2100 cutter bar (full spring steel)
- 100.187** Upgrade PTO shaft/clutch (130hp/97kw W2600 series)

Parts

- 100.134** KANGA stepped suction blades (pair)
- 100.135** KANGA 3/4" blade bolt kit
- 100.136** KANGA 7/8" blade bolt kit (suit cutters pre-2008)
- 100.181** H1800 disc rotor blades (each)
- 100.182** H2100 disc rotor blades (each)
- 100.183** Disc rotor 1" bolt kit (per blade)



Multi mount sliding tower



Blade bolt inspection cap



Blade exclusion zones



Waterproof manual holder



Countersunk blade bolts